



2015 Safety Footwear

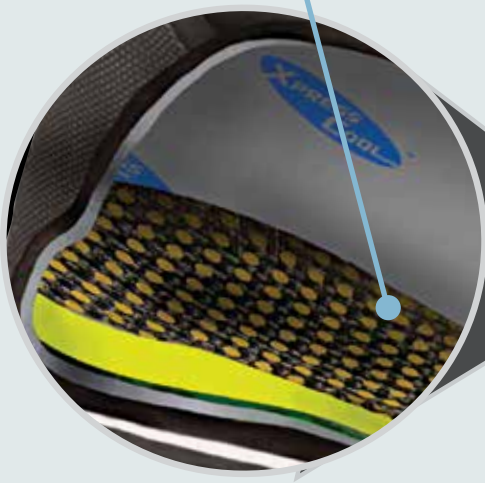


XpressCool™

Exclusive Evaporative Cooling Liner

Year-Round Comfort

etc® sock lining
reduces under foot friction and
heat build up, allowing for a
more comfortable overall feel.



Spandura® is an added layer
over Neoprene to protect
against wear and increase
the life of your boots.

High grade rubber
exterior provides a
tough waterproof barrier

6mm EVA contoured molded
midsole provides additional
support and comfort

XpressCool™ material: offers
antimicrobial properties which
protect against bacteria, fungus
and other microorganisms.

Vibram™ Outsole-Exclusive Design

- Muck Boots feature top quality Vibram outsoles, which utilize the latest technology in comfort and reliability

Large toe pad
to increase
toe-off traction

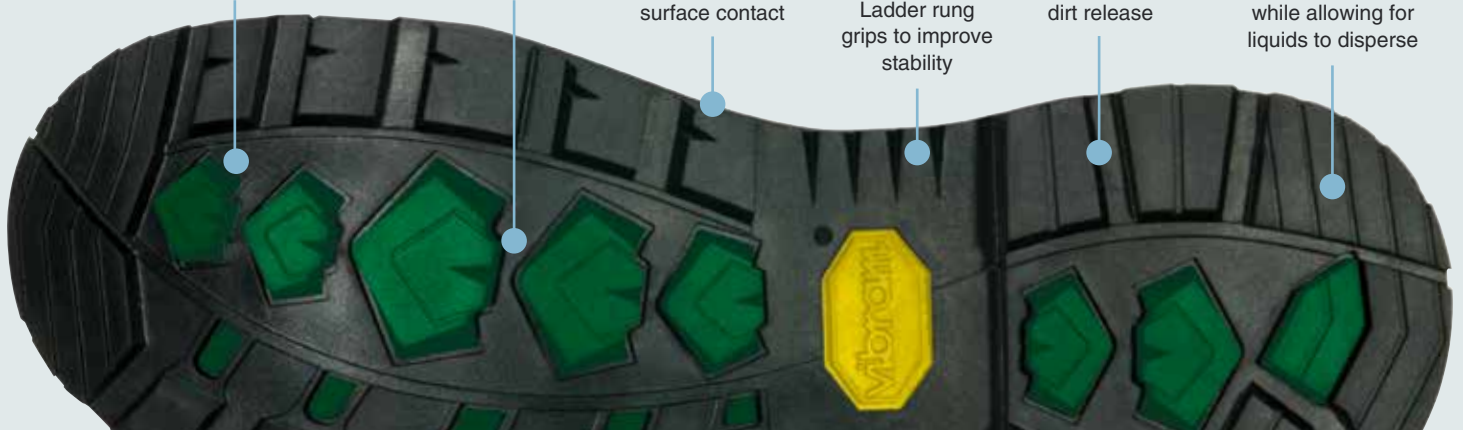
Central plaque
design follows the
walking motion

Wide broad lugs
for improved
surface contact

Ladder rung
grips to improve
stability

Straight lug
walls for better
dirt release

Grooved heel pad to
reduce slip hazard
while allowing for
liquids to disperse

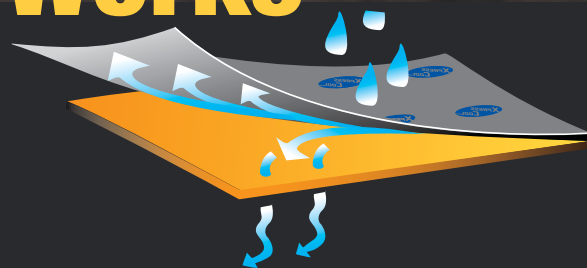


Muck Boot Company has designed industrial safety boots to tackle the toughest working environments, while providing exceptional comfort. Muck Chore are 100% waterproof, high-performance boots, with quality and comfort that will go beyond your expectations.



HOW XpressCool™ Works

- As the foot starts to sweat, the Muck XpressCool™ fabric rapidly pulls moisture away from your skin.
- The Muck XpressCool™ lining absorbs and spreads the moisture out across the boot lining to drier areas of the boot to enhance the evaporative drying rate.
- Most importantly, as the moisture is spread and dries, it creates a cooling effect which keeps your feet **COOL** and dry in warm weather.



CHORE COOL SERIES

STEEL TOE

COMFORT
SUB FREEZING to 95°F/ 35°C
RANGE



COMFORT
SUB FREEZING to 95°F/ 35°C
RANGE



STEEL TOE

Chore Cool Series is an all-condition safety toe work boot. The Muck Cool boots keep workers' feet comfortable in temperatures ranging from sub-freezing to 95°F.

CHORE COOL Safety Toe

- New comfortable XpressCool™ lining material keeps your feet cool and dry in warm weather
- 4mm CR flex-foam bootie with four way stretch nylon
- 100% waterproof, lightweight and flexible
- Steel toe impact protection
- Steel shank for additional arch support
- Spandura® added to the exterior of the neoprene for added protection against wear and abrasion.
- Vibram outsole for improved durability and performance
- etc® sockliner lining to reduce friction and heat build up
- Upper is triple reinforced in the toe area and quadruple reinforced in the heel area
- Meets ASTM F2413-11 M I/75 C/75 EH

CSCT-000 Black, steel toe, 16 inch

Men's 5-14
Women's 6-13 (unisex)
Boxed, 4 pairs per case

CHORE PRO COOL Safety Toe

- New comfortable XpressCool™ lining material keeps your feet cool and dry in warm weather
- 4mm CR flex-foam bootie with four way stretch nylon
- 100% waterproof, lightweight and flexible
- Steel toe impact protection
- Steel shank for additional arch support
- Full rubber coverage provides protection for neoprene lining against scratches, salts, minerals, and oils
- etc® sockliner lining to reduce friction and heat build up
- Upper is triple reinforced in the toe area and quadruple reinforced in the heel area
- New Vibram outsole for improved durability and performance
- Meets ASTM F2413-11 M I/75 C/75 EH

CPCT-000 Black, steel toe, 16 inch

Men's 5-14
Women's 6-13 (unisex)
Boxed, 4 pairs per case

Arctic Series is an insulated boot for extreme weather conditions. The CR flex-foam bootie is fleece lined to insulate against the cold and wind in temperatures down to -60°F!

ARCTIC PRO Safety Toe

Professional Extreme-Conditions Work Boot

- 8mm CR flex-foam bootie with four way stretch nylon
- Fleece lined for added warmth and comfort
- 100% waterproof, light-weight and flexible
- Steel toe impact protection
- 2mm thermal foam underlay added to the instep area for additional warmth
- EVA molded midsole with contoured footbed
- Bob-Tracker molded outsole is rugged, aggressive and durable for maximum protection and stability
- Double reinforcements on the instep, heel and achilles
- Added toe protection with wrap-up bumper
- Meets ASTM F2413-11 M I/75 C/75 EH

ACP-STL0 Black, steel toe, 16 inch

Men's 7-14
Women's 8-13 (unisex)
Boxed, 4 pairs per case

COMFORT
-60°F/-50°C to 40°F/4°C
RANGE



STEEL TOE

ARCTIC SPORT Safety Toe

Extreme-Conditions Work Boot

- 5mm CR flex-foam bootie with four way stretch nylon
- Fleece lined for added warmth and comfort
- 100% waterproof, lightweight and flexible
- Steel toe protection
- 2mm thermal foam underlay added to the instep area for additional warmth
- EVA molded midsole with contoured footbed
- MS-1 molded outsole is rugged, aggressive and durable for maximum protection and stability
- Double reinforcements on the instep, heel and achilles
- Added toe protection with wrap-up bumper
- Meets ASTM F2413-11 M I/75 C/75 EH

ASP-STL Black, steel toe, 16 in

Men's 7-14
Women's 8-13 (unisex)
Boxed, 4 pairs per case

COMFORT
-40°F/-40°C to 60°F/15°C
RANGE



STEEL TOE



Work boots meet all requirements for the toughest work conditions while surpassing maximum protection and comfort.



STEEL TOE

METATARSAL
GUARD



STEEL TOE

CMS-000A



CHH-000A

CHORE META

- 5mm CR flex-foam bootie with four-way stretch nylon
- 100% waterproof, lightweight and flexible
- Steel toe impact protection
- PORON® XRD™ Metatarsal Guard is soft and flexible, but becomes rigid when struck for excellent metatarsal protection that exceeds ASTM standards
- Steel shank for additional arch support
- Upper is triple reinforced in the toe area and quadruple reinforced in the heel area for longer boot life and durability
- Durable, lightweight, rubber outsole with self-cleaning channels for optimal slip-resistance
- Meets ASTM-F2413-11 M I/75 C/75 MT/75 EH

CHS-META Black, steel toe, metatarsal guard, 16 in

Men's 5-14
Women's 6-13 (unisex)
Boxed, 4 pairs per case

CHORE STEEL TOE

- Lightweight, self-insulating CR flex-foam bootie provides a snug fit to keep out cold temperatures and keep workers' feet warm
- Hand-layered construction is sealed for 100% waterproof reliability
- Steel toe impact protection
- Breathable air-mesh lining wicks away humidity and perspiration
- Removable EVA sock liner
- Diamond-textured toe and heel reinforcements resist scuffs and scratches
- Extra wide kick off lugs for easy hands free removal
- Meets ASTM F2413-11 M I/75 C/75 EH

CHS-000A Black, steel toe, 16 in
CMS-000A Black, steel toe, 12 in

Men's 5-14
Boxed, 4 pairs per case

CHORE

- 5mm CR flex-foam bootie with four-way stretch nylon
- 100% waterproof, lightweight and flexible
- Steel shank for additional arch support
- Upper is triple reinforced in the toe area and quadruple reinforced in the heel area for longer boot life and durability
- Durable, lightweight, rubber outsole with self-cleaning channels for optimal slip-resistance
- Kick rim for easy, hands-free removal
- Wide-cut heel base for added stability
- Meets ASTM F2413-11 EH

CHH-000A Black, plain toe, 16 in
CHM-000A Black, plain toe, 12 in

Men's 5-16
Boxed, 4 pairs per case

WORK CHORE SERIES





Honeywell Safety Products

900 Douglas Pike

Smithfield, RI 02917

Toll Free Phone: 800.777.9021

Toll Free Fax: 800.267.6809

www.honeywellsafety.com

© 2015 Honeywell International Inc

Honeywell Safety Products Footwear Protection family of brands includes:

SERVUS
by Honeywell

RANGER
by Honeywell

OLIVER
SINCE 1887
by Honeywell

NEOS
OVERSHOE

KING'S
by Honeywell